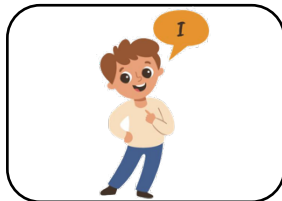


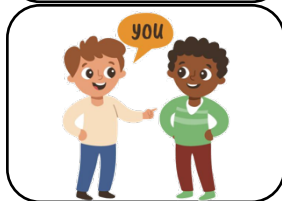
To be

Nutid

Ental



I am Jeg er



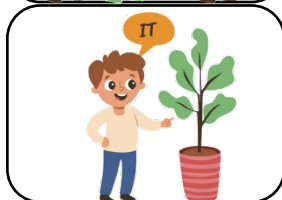
You are Du er



He is Han er



She is Hun er

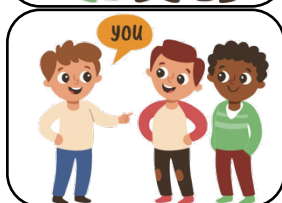


It is Den/det er

Flertal



We are Vi er



You are I er



They are De er

To be

Datid

Ental



I was Jeg var



You were Du var



He was Han var



She was Hun var



It was Den/det var

Flertal



We were Vi var



You were I var



They were De var